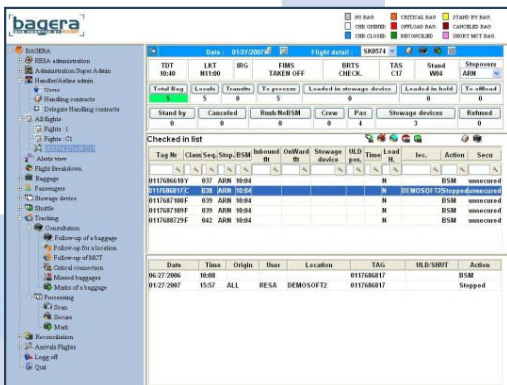


Baggage Reconciliation and Tracking System

A complete solution for baggage reconciliation

Enhanced baggage tracking and reconciliation



Baggage reconciliation and tracking are key elements in airport management in terms of security, rapidity and better service for airlines and airports.

BAGERA is a comprehensive reconciliation and tracking system, based on the latest technologies and designed to match each checked and transit bag with the corresponding flight and passenger. It provides reliable information about where a bag is located at all times, from check-in to loading, and whether it is matched with a boarded passenger or not.

BAGERA follows ICAO Annex 17 and is fully compliant with IATA recommendation 1745.

All the information needed to operate the BRS is contained on one main screen.

Baggage information management

BAGERA retrieves baggage and passenger information from all airline DCS systems. It matches IATA bag messages with the flight information received from the Airport Information System (INFOPAX or any other system) and then tracks the bag all along the way from check-in, to bag belts, through to ULDs and the loading point.

At all times, BAGERA can send bag messages back to the airlines (tracking and manifests).

Easy and secure reconciliation

Hand-held terminals

Using rugged mobile bar-code scanners, baggage handlers have access to real-time information that helps them assign ULDs to flights, locate bags, load or offload ULDs, etc. In addition, baggage handlers can create rush bags without receiving bag messages from the airlines. They can also work in disconnected mode (for distant parking stands).



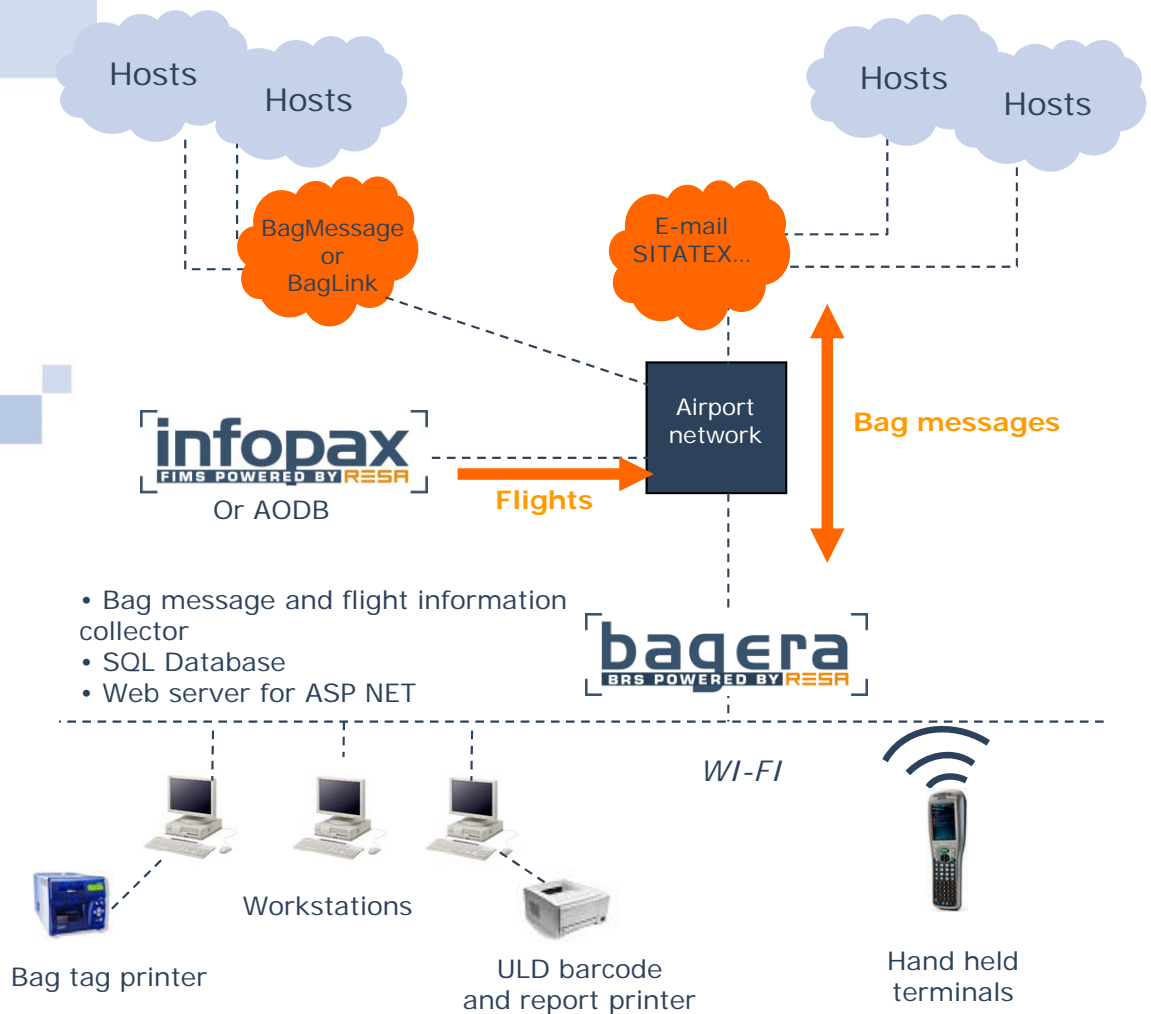
Workstations

BAGERA workstations enable supervisory staff (loadmasters, etc.) to assign ULDs to flights, monitor the bag loading progress, authorize rush bags, cancel bags, reprint a damaged bag tag and generally perform all baggage tracking and reconciliation operations. BAGERA client workstations can also print bag manifests at any time.

Baggage Reconciliation and Tracking System

General architecture

Functional architecture



BAGERA modules

BAGERA is composed of various modules:

- ≡ Application gateways for sending and receiving bag messages (BSM, BPM, BUM, BCM etc.) to and from airlines and the AODB,
- ≡ Relational database where bag data are stored for baggage/passenger reconciliation,
- ≡ Web server providing an informational and working interface for client workstations.

Please feel free to contact us for detailed documentation about BAGERA.