

Resource Management System

Simplified graphic management of airport resources

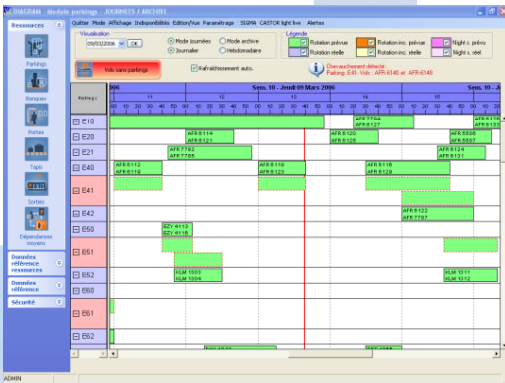


DIAGRAM was designed and developed to simplify the management of resources needed to process flights, using a graphic interface to view and allocate resources.

DIAGRAM, an integral module of INFOPAX, RESA's Airport Information System, meets the operational management needs of airports.

Secure, interactive solution

DIAGRAM interfaces with the INFOPAX centralized database and its seasonal and real-time programs. It features several resource management modules:

- check-in desks,
- baggage chutes,
- boarding gates,
- parking stands,
- baggage carrousel,
- exits.

In DIAGRAM, users can develop models for allocating flight resources based on a typical week at the airport taken from the seasonal schedule. The models can be applied over various periods and modified as needed.

Resources are allocated securely thanks to a series of consistency checks carried out by DIAGRAM. For instance, the type of aircraft is checked when a flight is assigned to a parking stand. Changes made using the graphic interface are immediately updated in the INFOPAX centralized database.

Intuitive and user-friendly tool

Thanks to the Drag and Drop® technology, users can see the result of their actions graphically. The print function can be used to quickly distribute the graphic to other agents.

DIAGRAM is perfect for daily resource management and is also very useful when working up projections.

DIAGRAM is a simple and user-friendly graphic airport resource management solution.

Perfectly integrated with INFOPAX, DIAGRAM illustrates RESA's goal of providing airports with a comprehensive offering that fully meets the specific requirements of the airport world.

Resource Management System

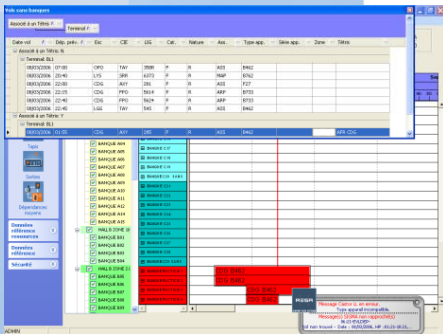
Features

Parking stand management

DIAGRAM displays the flights that are assigned to each parking stand over a given period. The look and feel of the user interface can be entirely customized (choice of colors according to the type of occupancy, time scale, etc.).

Many features are available, including:

- Direct input of projected and actual allocations,
- Graphic view in real time / completed,
- Consistency check between aircraft type and parking stand,
- Concept of changing parking stands for an aircraft on the ground,
- Concept of linked stands (occupation of one or more stands according to the aircraft type),
- Information on unavailabilities,
- Graphic display of parking resources actually in use, etc.



Check-in desk management

DIAGRAM can manage groups of check-in desks (TETRIS graphic mode) that are associated to flights (groups of adjacent counters for a variable period). Check-in desks are allocated by Drag & Drop® technology.

DIAGRAM can also complete exceptions for the upcoming days or in real time and make last minute changes in real time.

Gate, carrousel and exit management

DIAGRAM includes native modules for managing boarding gates, baggage carrousels and exits in projected or real-time mode, as well as standard resource allocation models. There is also a linked resource module for automatically allocating gates, carrousels and exits to flights according to the stand, terminal and flight nationality.

Baggage chute management

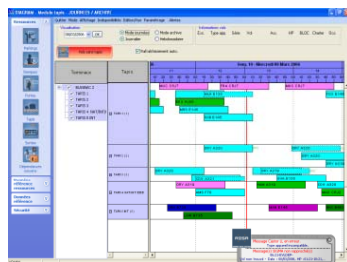


DIAGRAM can manage groups of bag chutes that are associated to flights. Bag chutes can be assigned based on baggage class or flight stopover. The use time is automatically set to the use time of the check-in counters.

When a group of check-in counters is assigned, a related group of bag chutes can automatically be assigned as well.

Please feel free to contact us for detailed documentation about DIAGRAM.