

Flight Information Display System

Public information display solution

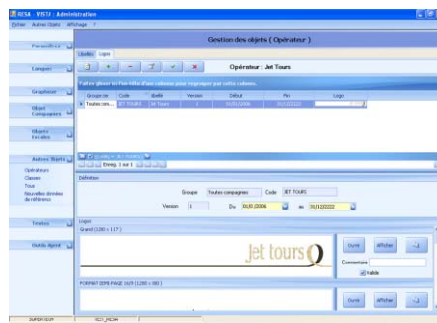
The VISTA Flight Information Display System distributes information on display terminals connected to the airport network (inside or outside the airport) using a TCP/IP protocol. It receives flight information (flight numbers, resources allocated to the flights, airlines, schedules, etc.) from the Airport Information System or any other source.

The new version of VISTA is entirely based on the latest market standards: development in .NET, Microsoft SQL 2008 database, TCP/IP. This completely redesigned version offers new graphic capabilities, simplified administration and powerful supervision and user tools.

Comprehensive settings

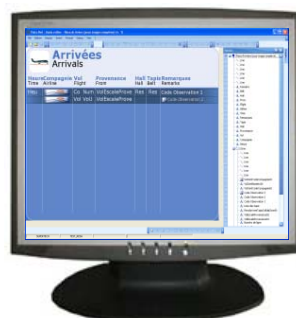
VISTA has a wide range of possible configurations.

The system provides a comprehensive description of the fleet of display devices, including resolution, protocol, IP addresses, location, etc. for enhanced supervision.



The system also features simplified and centralized management of logos, texts and videos, with storage and immediate display functions. All image formats and all display technologies are supported, including TFT, plasma, LED, etc.

Image creation is easy thanks to a PowerPoint-type interface (drag & drop), with a variety of objects available (texts, logos, videos). Complex images can be created using several simple images from various sources (flight list + bus list + weather information).



VISTA is a comprehensive and open information display system which manages an unlimited number of display terminals (either locally or remotely).

Flight Information Display System

Easy administration

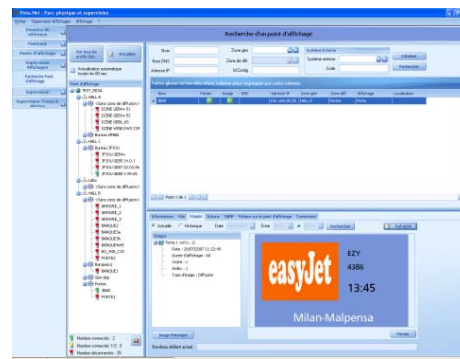
Simplified image display

With VISTA, images can be dynamically scheduled and displayed on all the screens. For instance, the airport can define a single arrival image and display it on all the screens concerned.

It is also possible to alternate between several images, display information in several languages, and sort data by time, stopover, etc.

VISTA automatically re-displays images if there is a failure on one of the display terminals, providing smart, dynamic management of groups of display devices showing flight lists.

Easy operation and supervision



VISTA includes supervision features that check connection status and verify accuracy of images and data displayed on all the monitors in the airport.

It stores a history of images displayed on the screens at any given time in case there is a complaint by the airport.

VISTA can also remotely supervise the display devices and monitor connection status with external systems. If there is a VISTA system failure, it is possible to update the information manually.

Powerful agent tools

VISTA tools are installed on the CREWS workstations so agents can control the information displayed at check-in counters and boarding gates (flights, logos, messages, etc.). Airport staff can easily schedule alternating images. Public service messages such as health and security alerts, strike information or advertisements can alternate with flight information.

